



## M-2004-A Brake Cooling Duct Kit INSTRUCTION SHEET

NO PART OF THIS DOCUMENT MAY BE REPRODUCED WITHOUT PRIOR AGREEMENT AND WRITTEN PERMISSION OF FORD RACING PERFORMANCE PARTS.

Please contact the Techline for the most current instruction information (800) FORD788.

**!!! PLEASE READ THE FOLLOWING INSTRUCTIONS CAREFULLY PRIOR TO INSTALLATION !!!**

### OVERVIEW:

- Fits 2005-09 Mustang GT with M2300-S/2007-09 SVT Mustang.
- Directs outside air to front brakes centers.
- Improves brake and wheel bearing life.
- Includes hoses and all necessary hardware.

The use of a floor hoist is recommended for this installation. If you do not have access to one, use a hydraulic floor jack and jack stands to raise the vehicle.

**!!! CAUTION: JACK STANDS MUST BE USED ON A LEVEL SURFACE AND BE SECURELY SEATED. FAILURE TO DO SO MAY RESULT IN PERSONAL INJURY OR VEHICLE DAMAGE !!!**



### KIT INCLUDES:

<u>Item #</u>	<u>Qty</u>	<u>Description</u>
1	2	4 ft High Temperature Hoses
2	2	Brake Dust Shields
3	2	Front Fascia to Hose Adaptor Plates
4	4	Brake Hose Clamps
5	4	Cable Ties
6	8	Rivets
7	6	Backing Plate Bolts

**NOTE:** Please check kit contents before starting work on the vehicle.

**Techline (800) FORD788**

Factory Ford shop manuals are available from Helm Publications, 1-800-782-4356

IS-1850-0177



## M-2004-A Brake Cooling Duct Kit INSTRUCTION SHEET

NO PART OF THIS DOCUMENT MAY BE REPRODUCED WITHOUT PRIOR AGREEMENT AND WRITTEN PERMISSION OF FORD RACING PERFORMANCE PARTS.

### **INSTALLATION INSTRUCTIONS:**

#### **Removal of Front Brakes:**

- STEP 1:** Raise and support the vehicle.
- STEP 2:** Remove front wheels (See Fig. 1, shown with M-2300-S Brake Upgrade).
- STEP 3:** Remove 2 caliper-to-knuckle bolts with 15 mm socket (See Fig. 2).



Fig. 1



Fig. 2

- STEP 4:** Remove caliper and secure to side (See Fig. 3).
- STEP 5:** Remove rotor (See Fig. 4).



Fig. 3



Fig. 4

**Techline (800) FORD788**

Factory Ford shop manuals are available from Helm Publications, 1-800-782-4356



## M-2004-A Brake Cooling Duct Kit INSTRUCTION SHEET

NO PART OF THIS DOCUMENT MAY BE REPRODUCED WITHOUT PRIOR AGREEMENT AND WRITTEN PERMISSION OF FORD RACING PERFORMANCE PARTS.

**STEP 6:** Remove 3 backing plate bolts (See Fig. 5).

**STEP 7:** Remove backing plates (See Fig. 6).



Fig. 5



Fig. 6

### Installation:

**STEP 8:** Install new brake cooling backing plate with 3 screws and torque to 20 Nm (15 lb-ft) (See Fig. 7).

**STEP 9:** Reinstall rotor (See Fig. 8).



Fig. 7



Fig. 8

**STEP 10:** Reinstall caliper and tighten caliper-to-knuckle bolts to 115 Nm (85 lb-ft) (See Figs. 9 and 10).



Fig. 9



Fig. 10

**Techline (800) FORD788**

Factory Ford shop manuals are available from Helm Publications, 1-800-782-4356



## M-2004-A Brake Cooling Duct Kit INSTRUCTION SHEET

NO PART OF THIS DOCUMENT MAY BE REPRODUCED WITHOUT PRIOR AGREEMENT AND WRITTEN PERMISSION OF FORD RACING PERFORMANCE PARTS.

**STEP 11:** Remove front lower grill (See Fig. 11).



Fig. 11

**STEP 12:** Set adaptor plates in fascia, mark and drill four (4) 1/8 inch holes for rivets (See Fig. 12).

**STEP 13:** Rivet adaptors to rear of fascia with rivets provided (See Fig. 13).



Fig. 12



Fig. 13

**STEP 14:** Put grill in place and mark opening from back side (See Fig. 14).

**STEP 15:** Using a 2½ inch hole saw, drill two (2) grill openings (See Fig. 15).



Fig. 14



Fig. 15

**Techline (800) FORD788**

Factory Ford shop manuals are available from Helm Publications, 1-800-782-4356



## M-2004-A Brake Cooling Duct Kit INSTRUCTION SHEET

NO PART OF THIS DOCUMENT MAY BE REPRODUCED WITHOUT PRIOR AGREEMENT AND WRITTEN PERMISSION OF FORD RACING PERFORMANCE PARTS.

**STEP 16:** Reinstall grill (See Fig. 16).

**STEP 17:** Attach hose at fascia hose adaptor with clamp provided (See Fig. 17).



Fig. 16

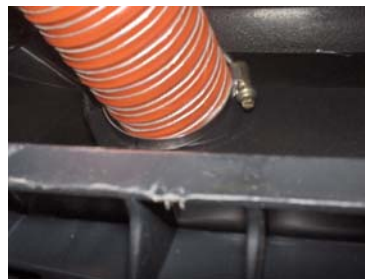


Fig. 17

**NOTE:** For installation in GT500 fascia, the hose attachment is in place. You will not use the front fascia-to-hose adaptor plates supplied in kit. You will just need to drill holes as described below.

**STEP 1:** **GT500 ONLY** – Locate hose attachment molded on back side of fascia (See Fig. 18).



Fig. 18

**STEP 2:** **GT500 ONLY** – Using a 2¼ inch hole saw, drill hole from back side of fascia through plastic grill (See Figs. 19 and 20).



Fig. 19



Fig. 20

**Techline (800) FORD788**

Factory Ford shop manuals are available from Helm Publications, 1-800-782-4356





## M-2004-A Brake Cooling Duct Kit INSTRUCTION SHEET

NO PART OF THIS DOCUMENT MAY BE REPRODUCED WITHOUT PRIOR AGREEMENT AND WRITTEN PERMISSION OF FORD RACING PERFORMANCE PARTS.

**STEP 3:**        **GT500 ONLY** – Attach hose at fascia with clamp provided (See Fig. 21).



Fig. 21

**STEP 18:**       Attach hose at brake cooling backing plate (See Fig. 22).

**STEP 19:**       Secure hose at tow hook and sway bar with cable ties provided (See Fig. 23).



Fig. 22



Fig. 23

**STEP 20:**       Turn steering to lock-to-lock and check hose routing and make any needed adjustments.

**STEP 21:**       Reinstall wheels and torque to 133 Nm (98 lb-ft).

### Torque Specifications:

Front brake shield to knuckle	20 Nm (15 lb-ft)
Front brake caliper-to-knuckle bolts	115 Nm (85 lb-ft)
Wheel nuts	133 Nm (98 lb-ft)

**Techline (800) FORD788**

Factory Ford shop manuals are available from Helm Publications, 1-800-782-4356